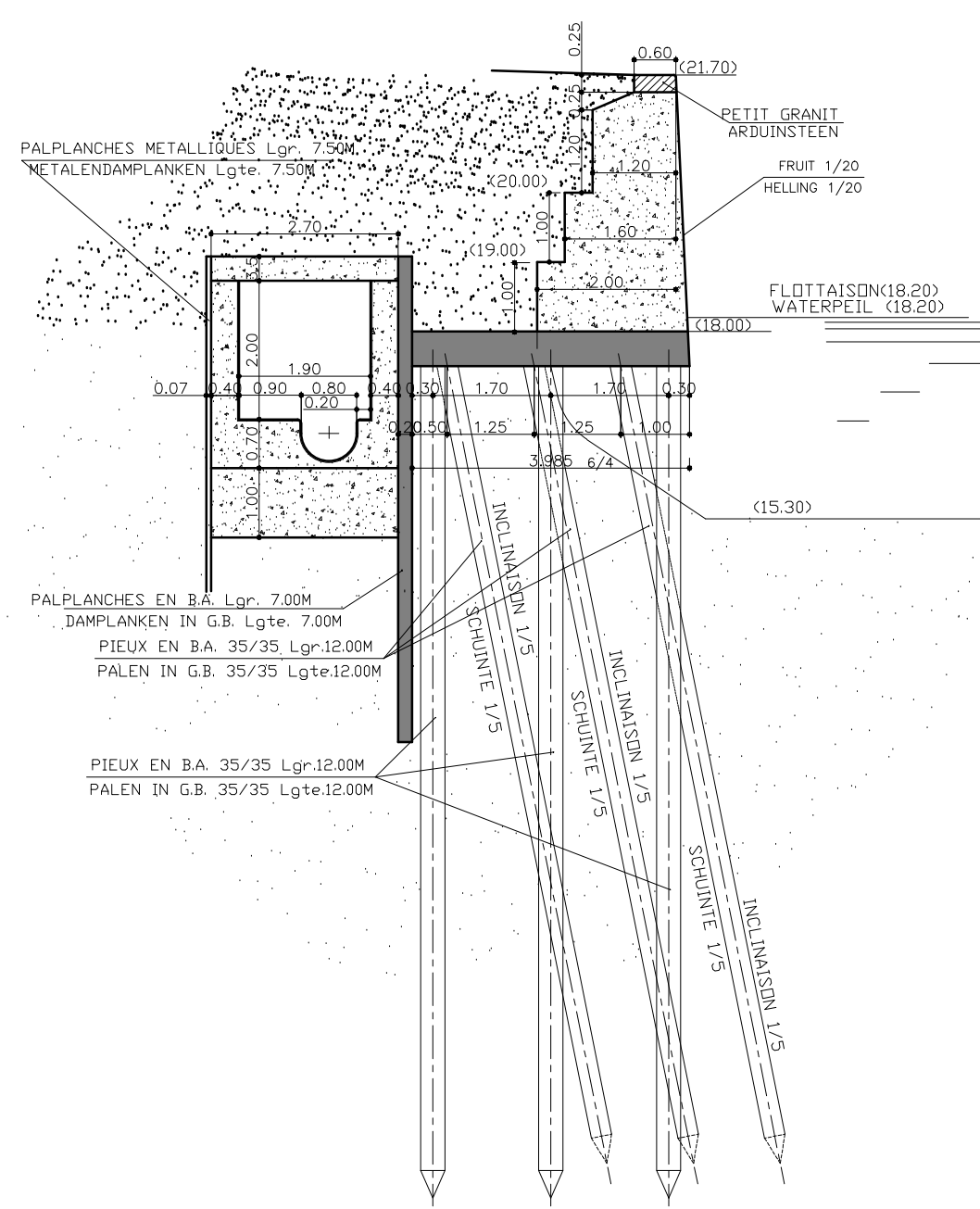
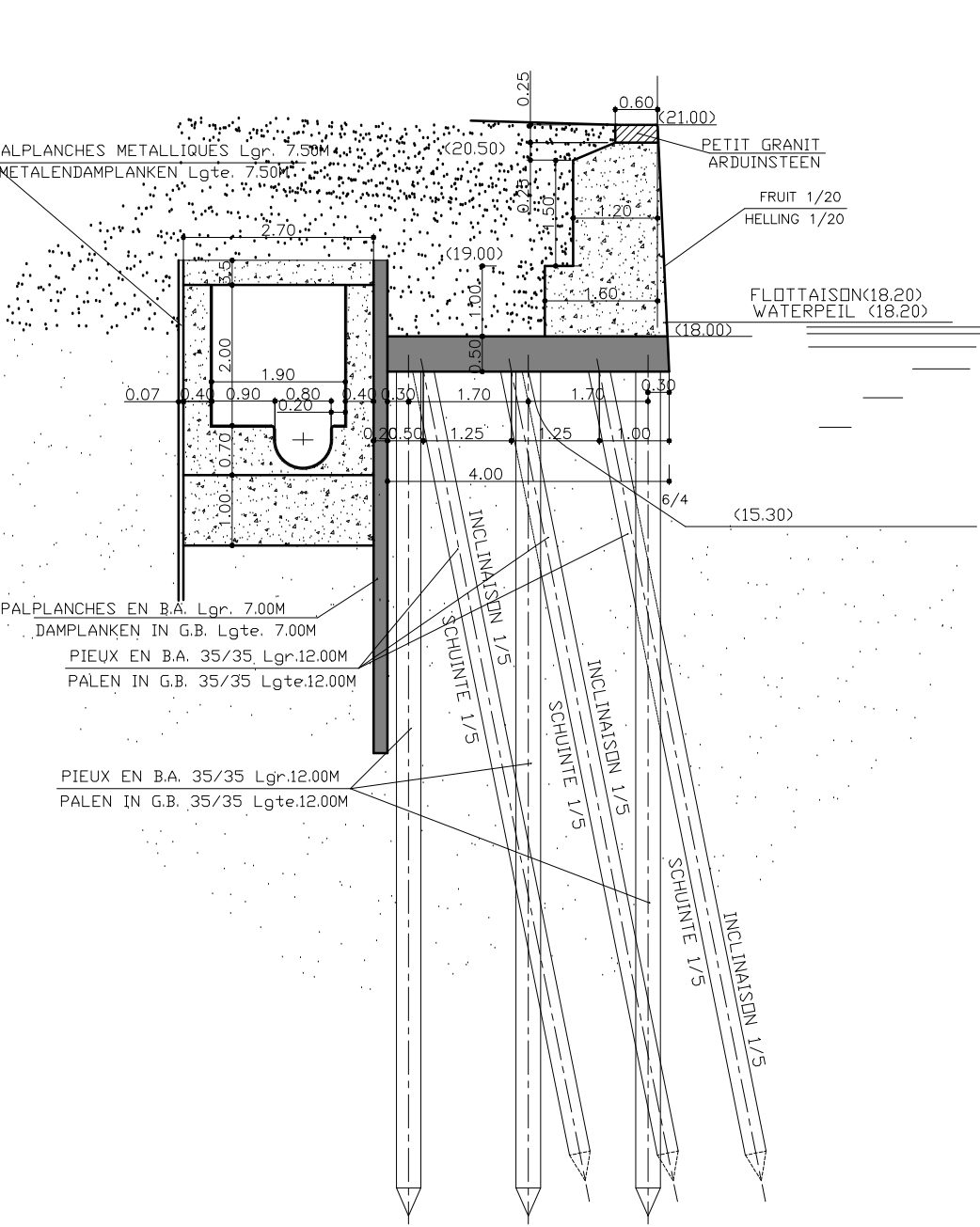


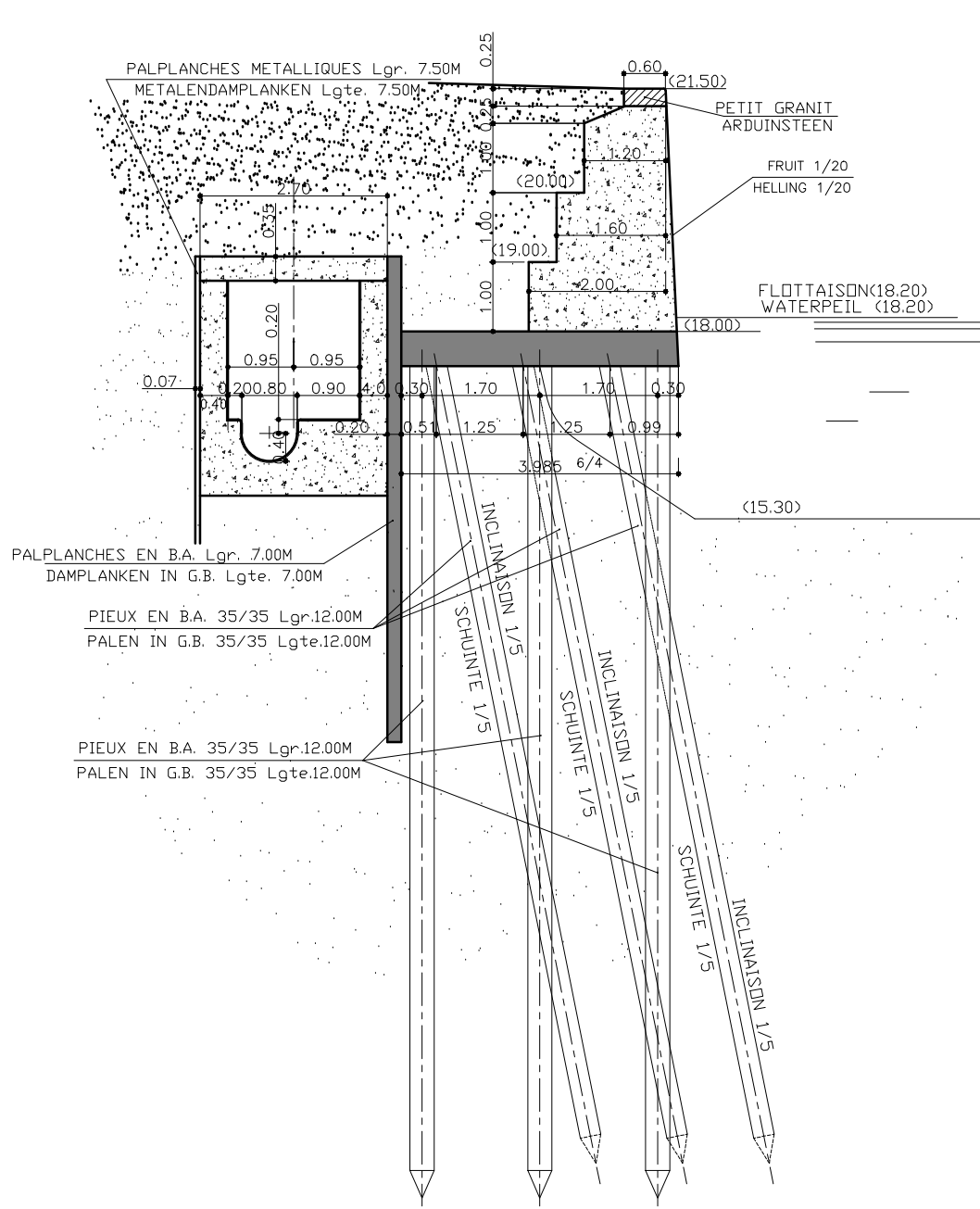
PR.2.14/1



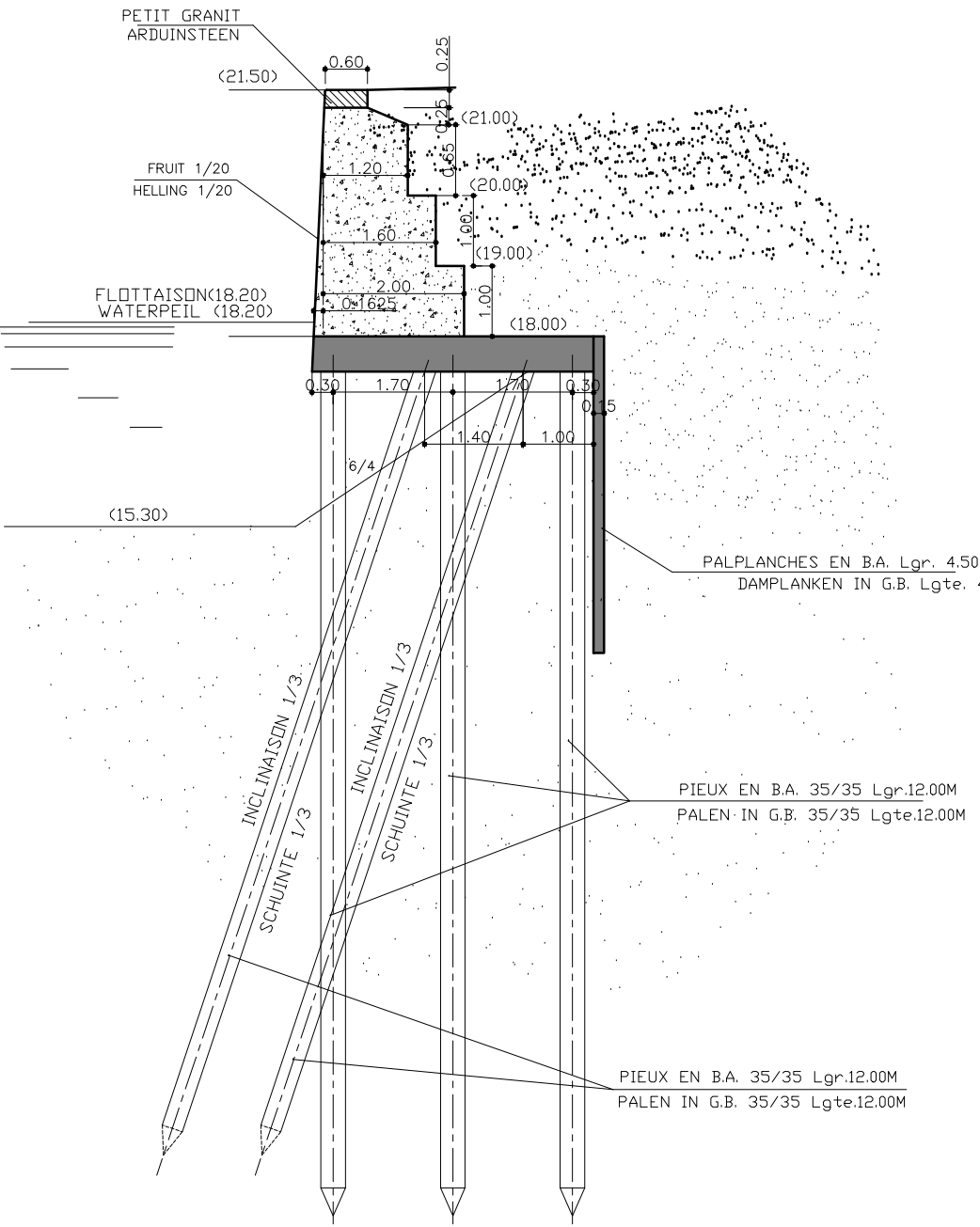
PR.2.32/2



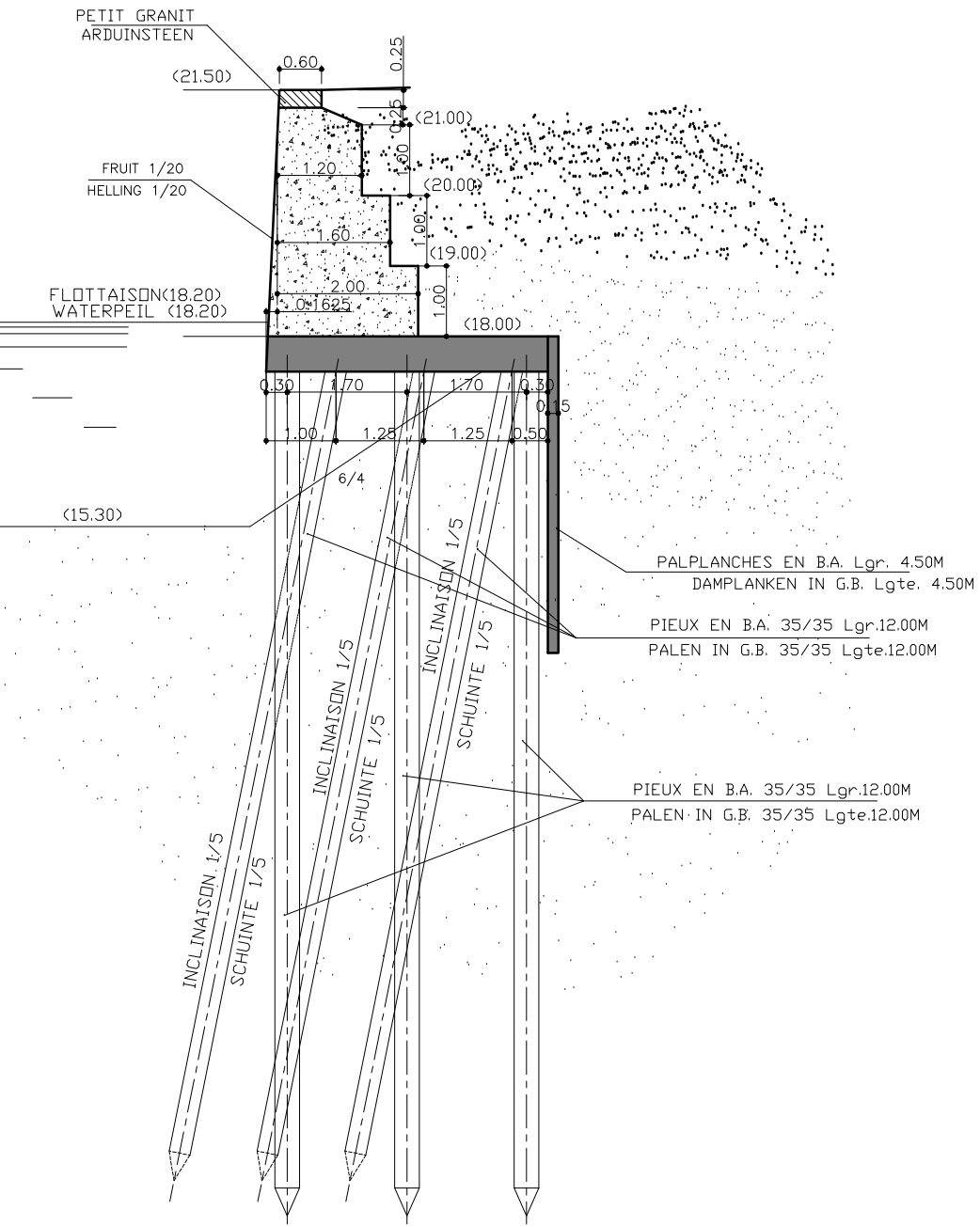
PR.2.14/3



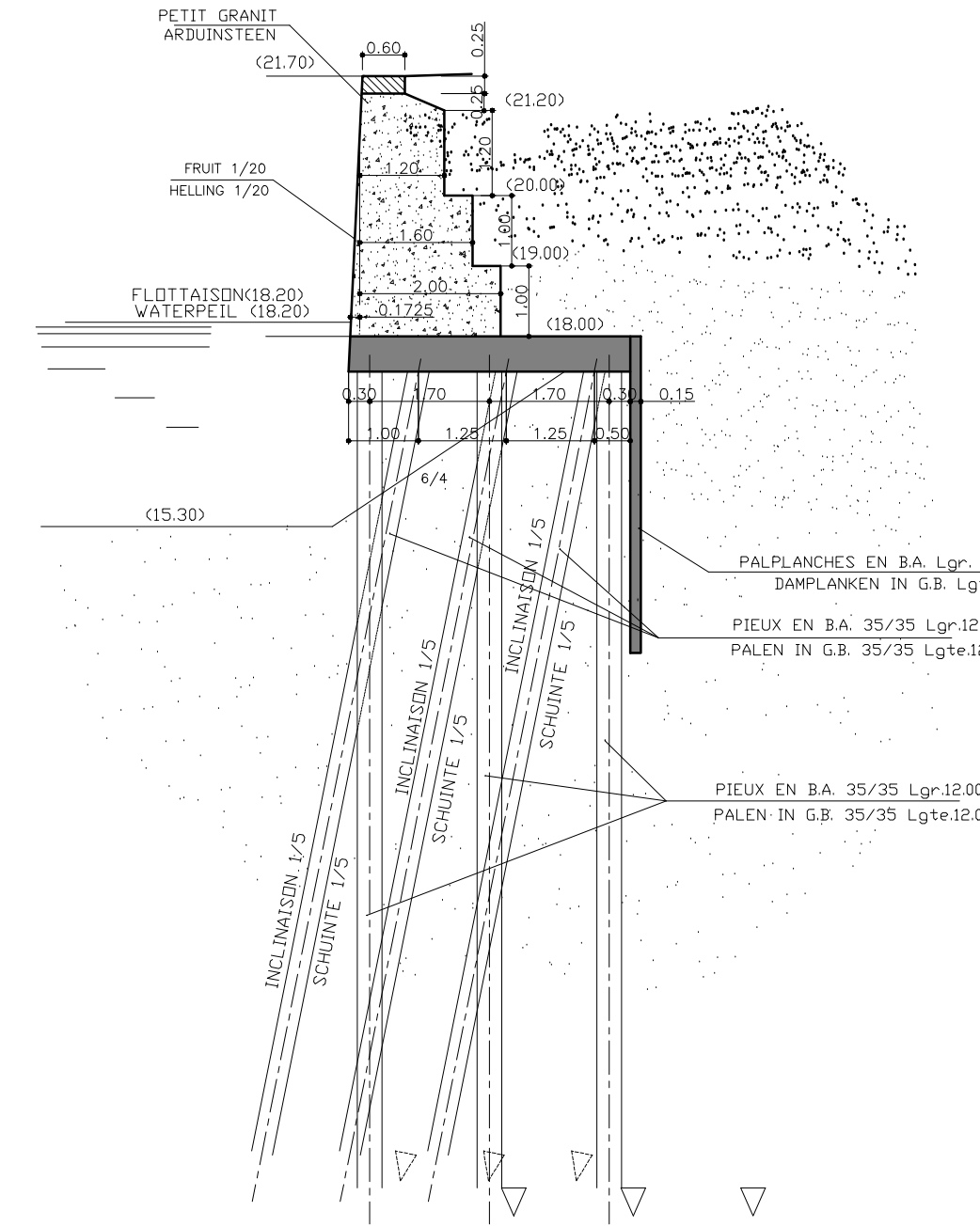
PR.2.17/1



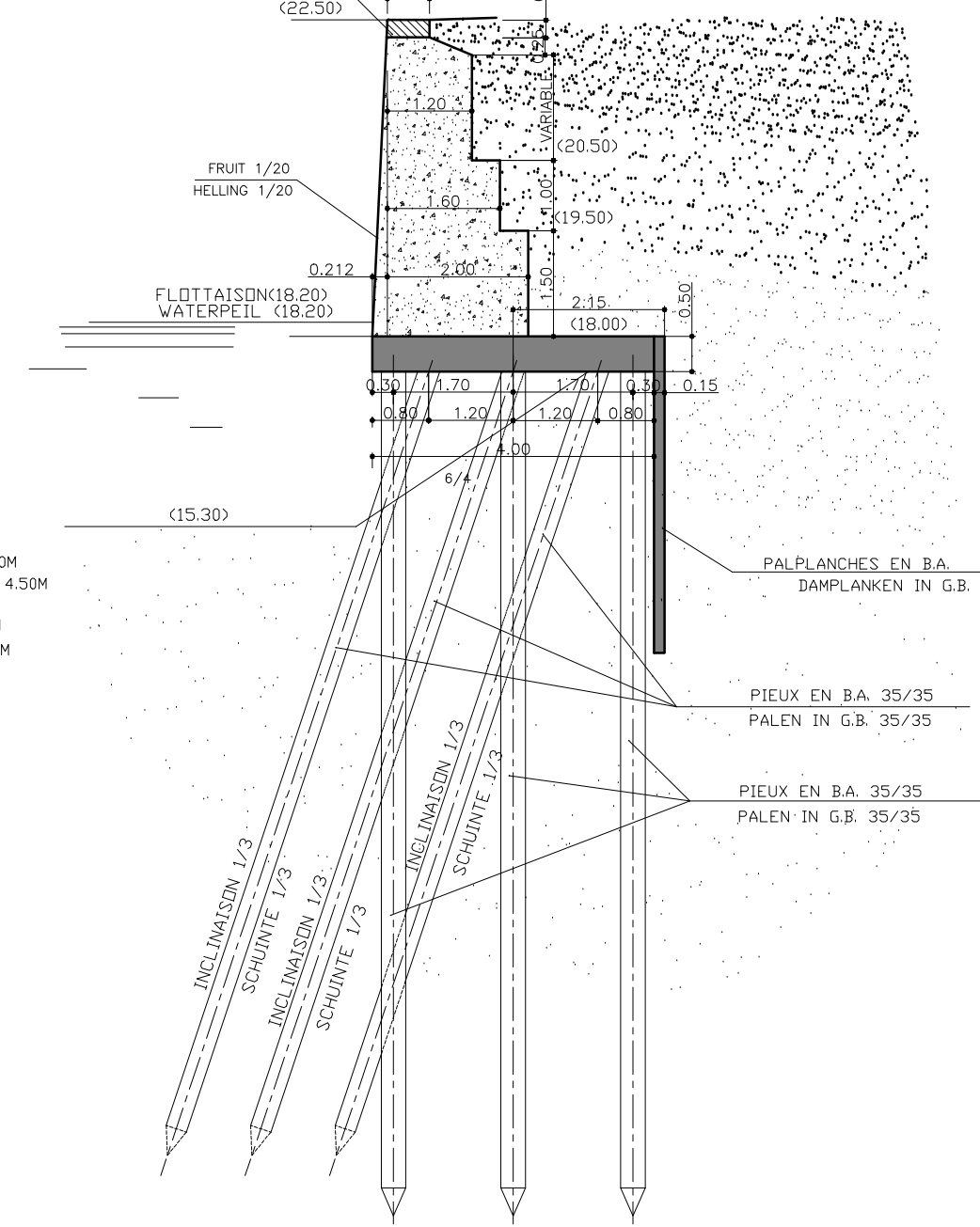
PR.2.17/2



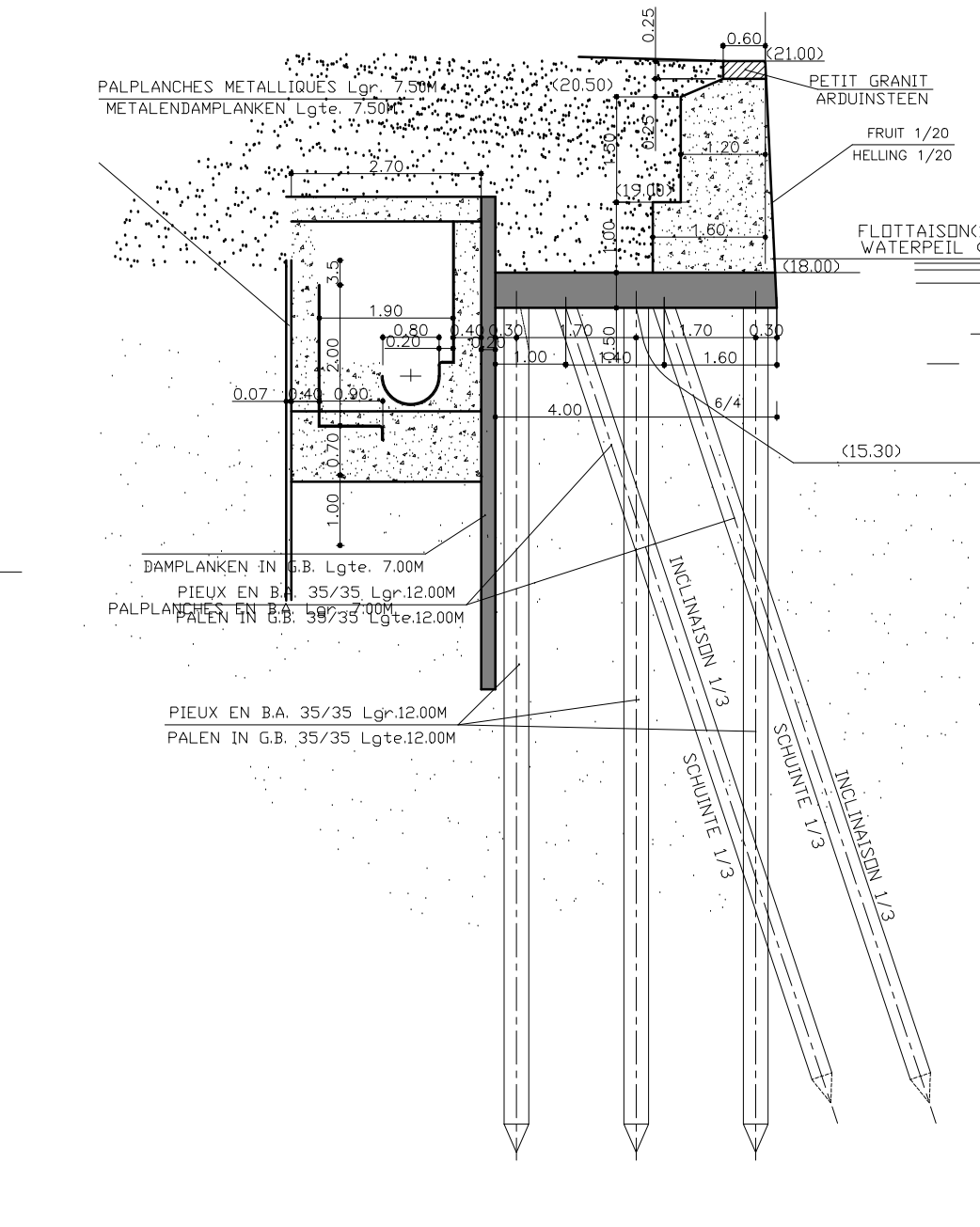
PR.2.17/3



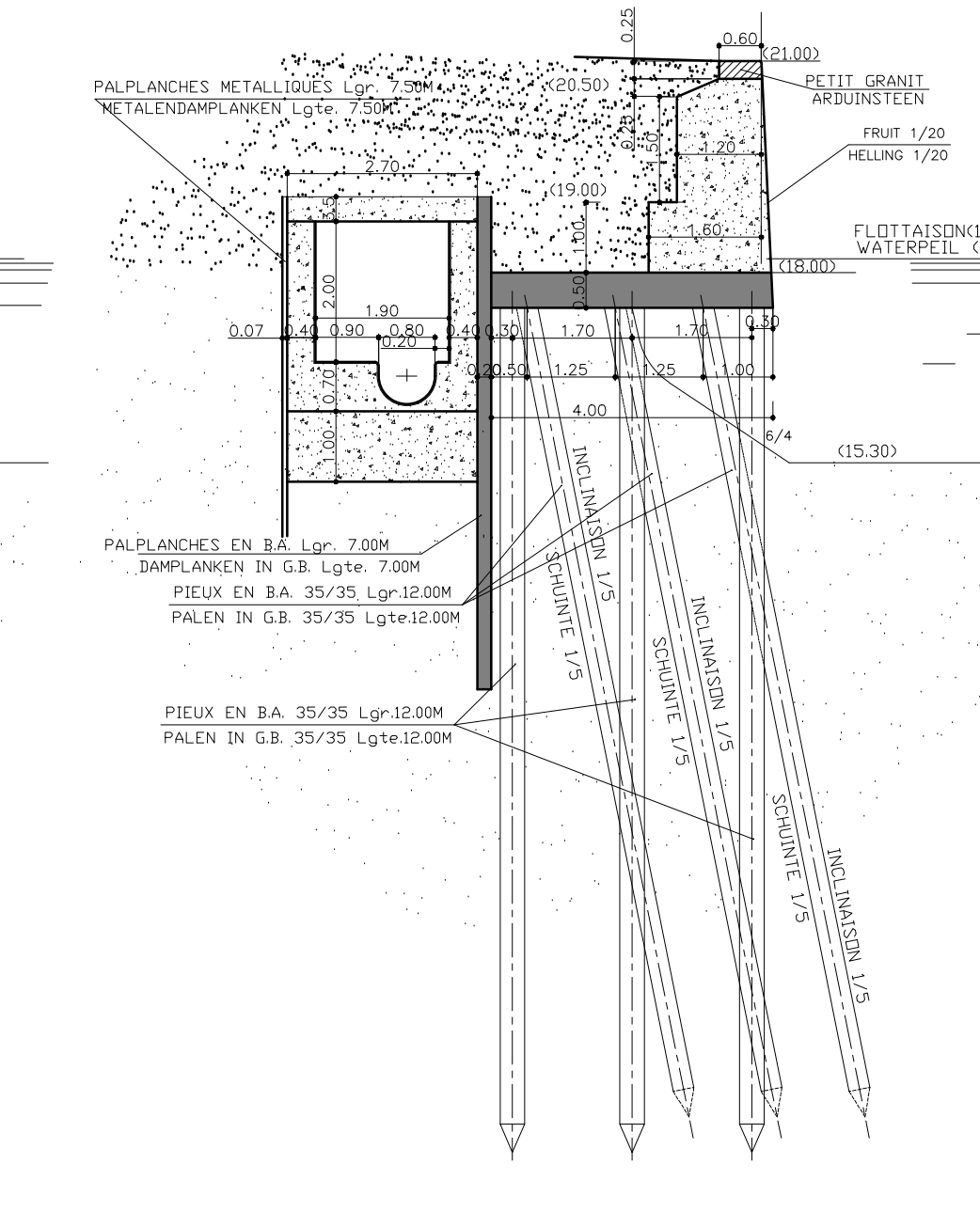
PR.2.31/3



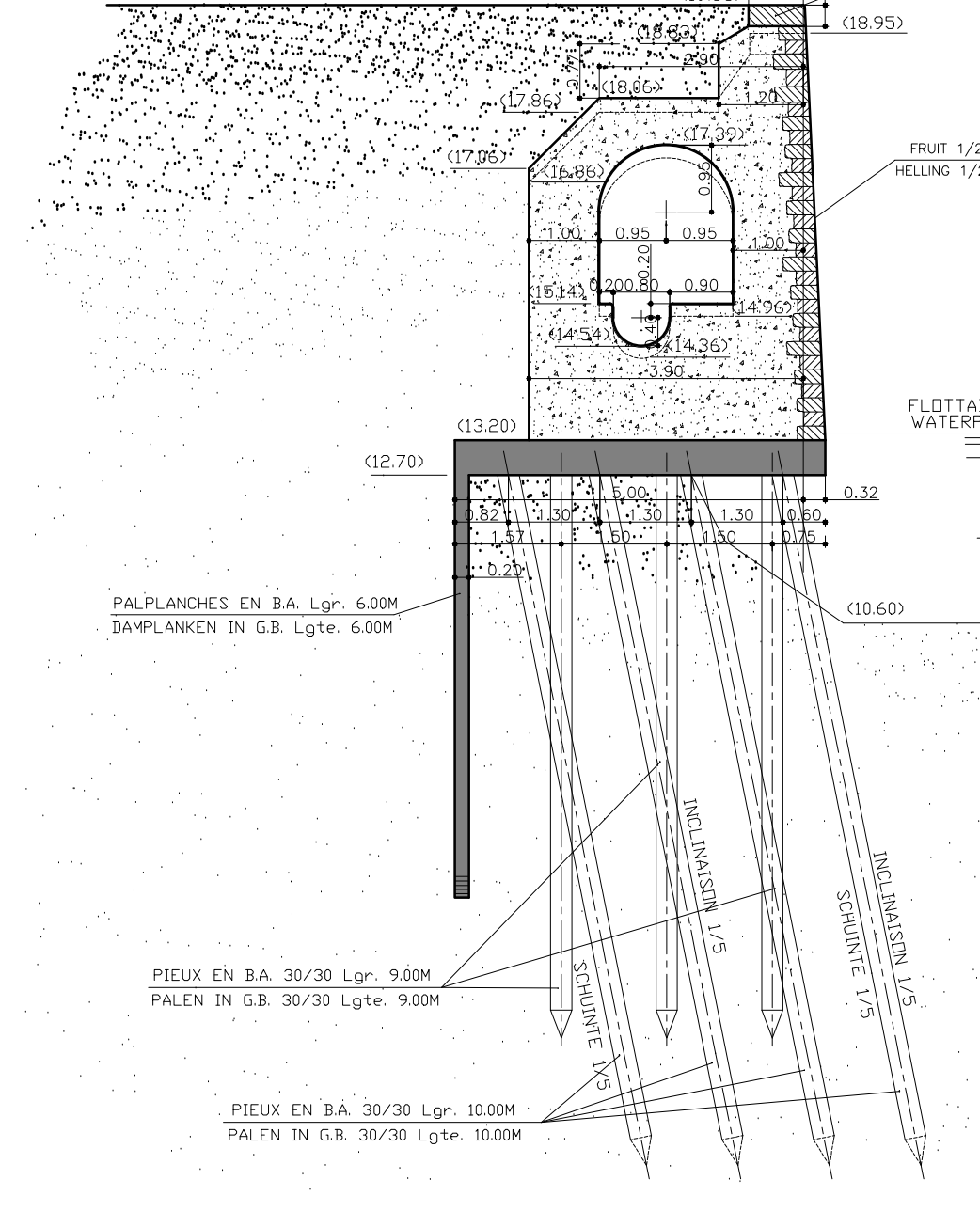
PR.2.32/1



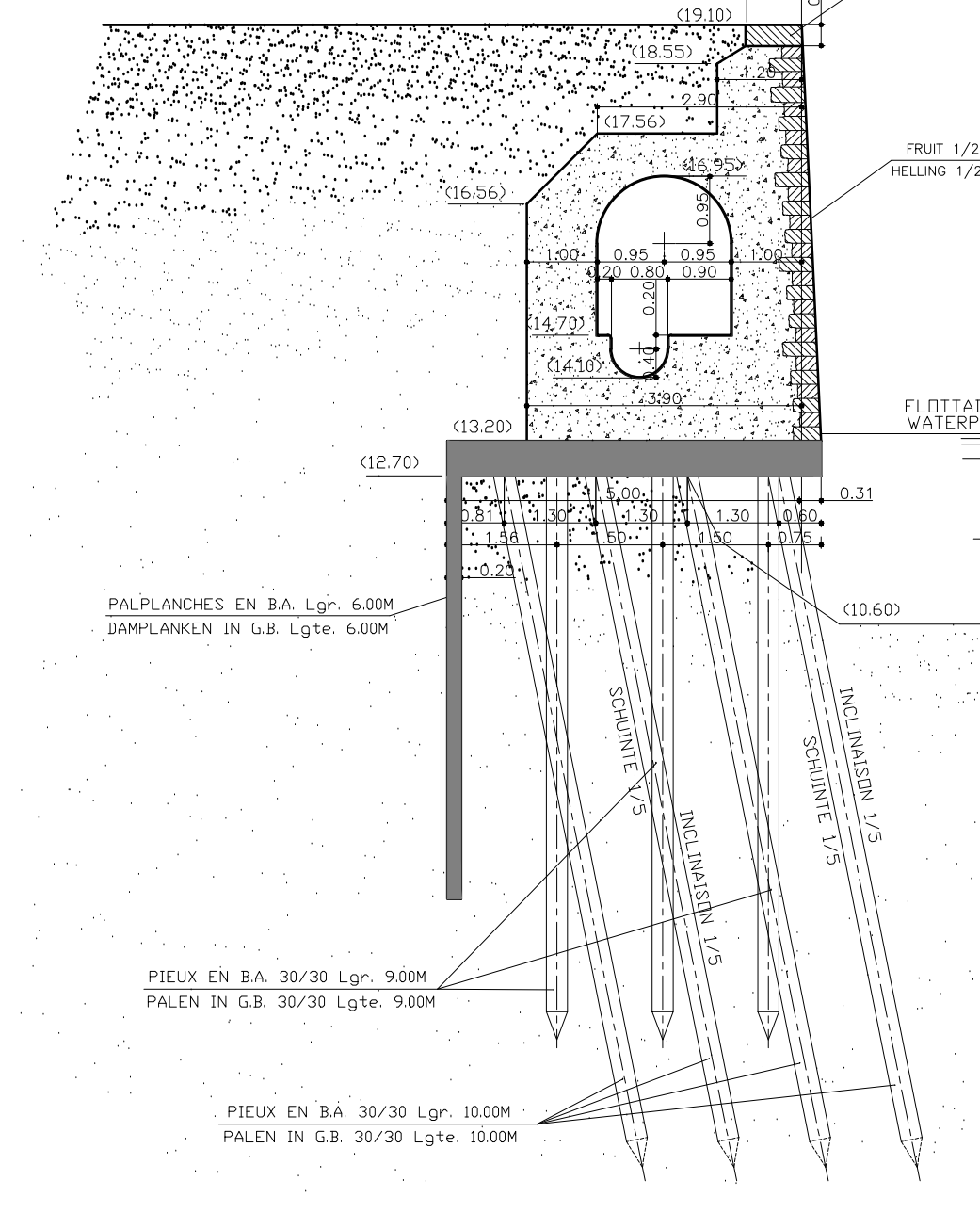
PR.2.32/2



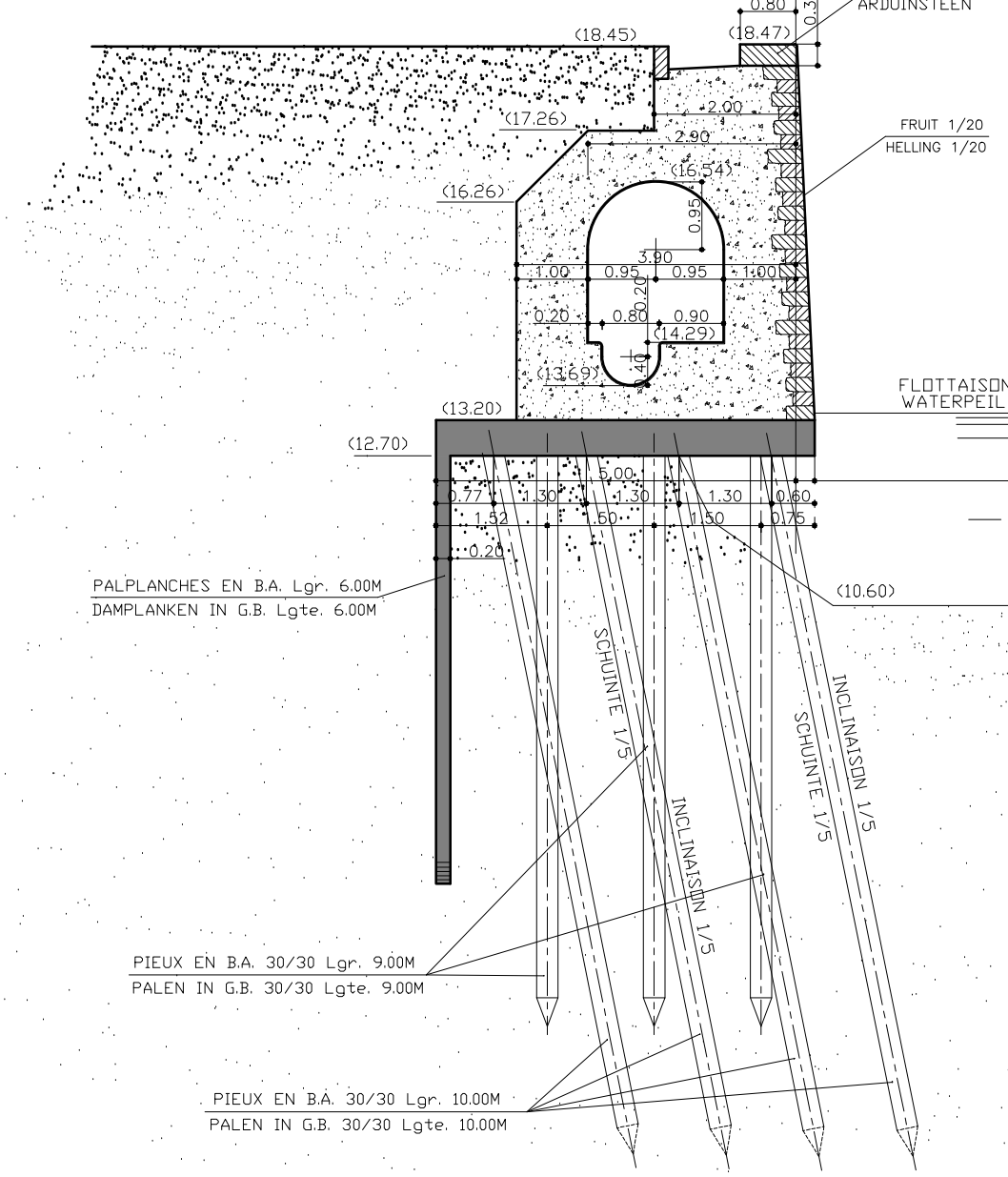
PR.2.37/I 2.37/II



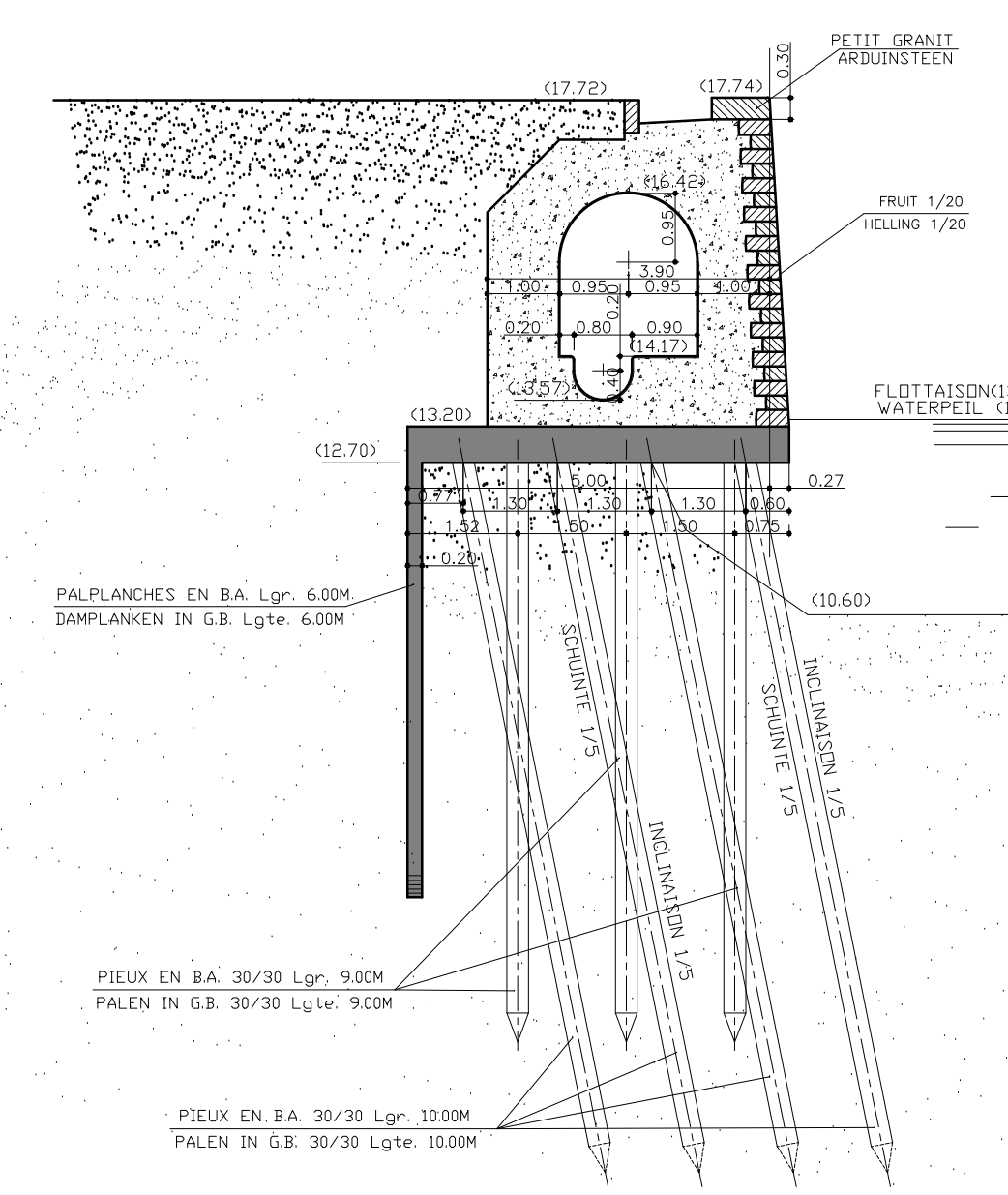
PR.2.37/IIbis



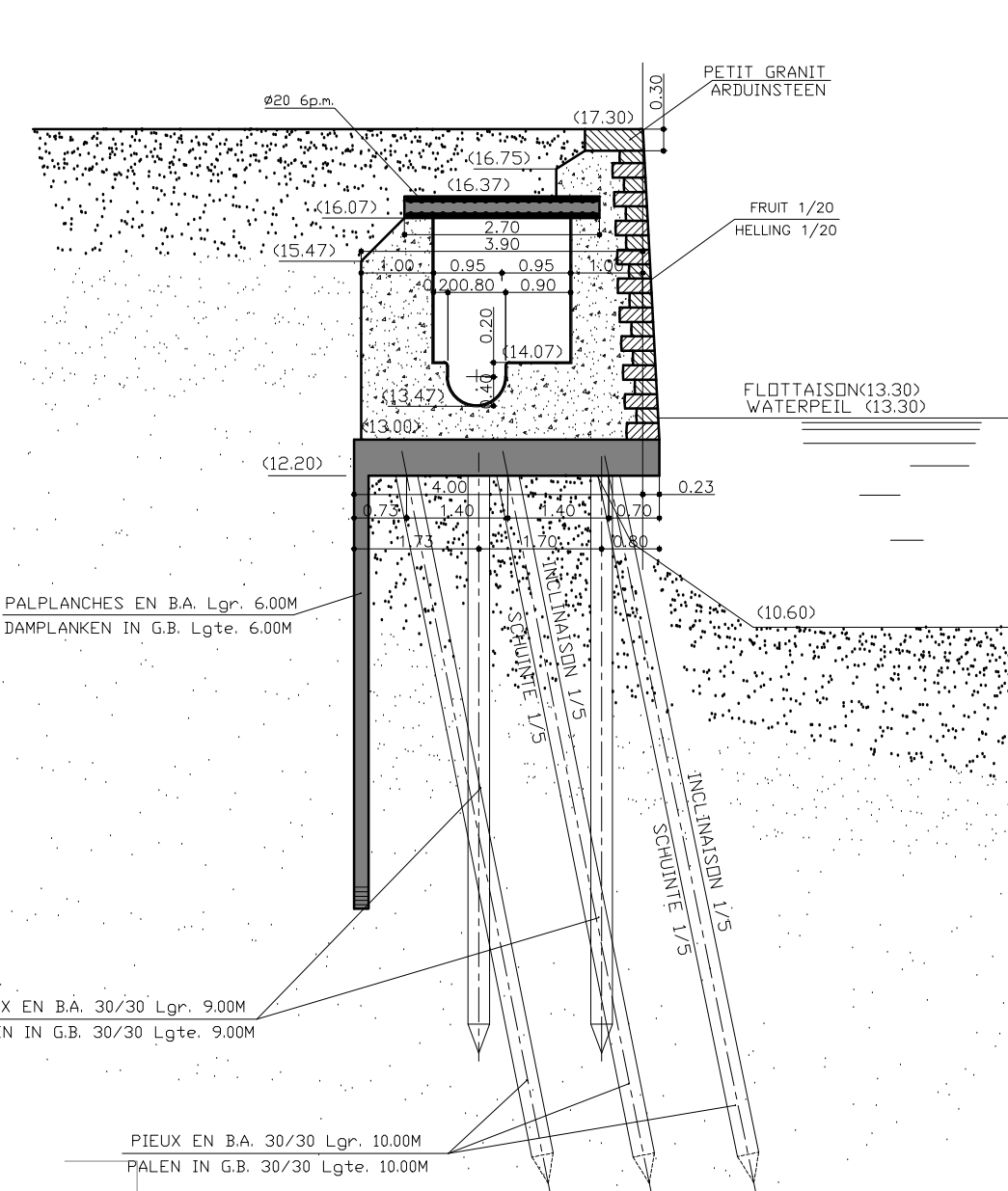
PR.2.37/VI



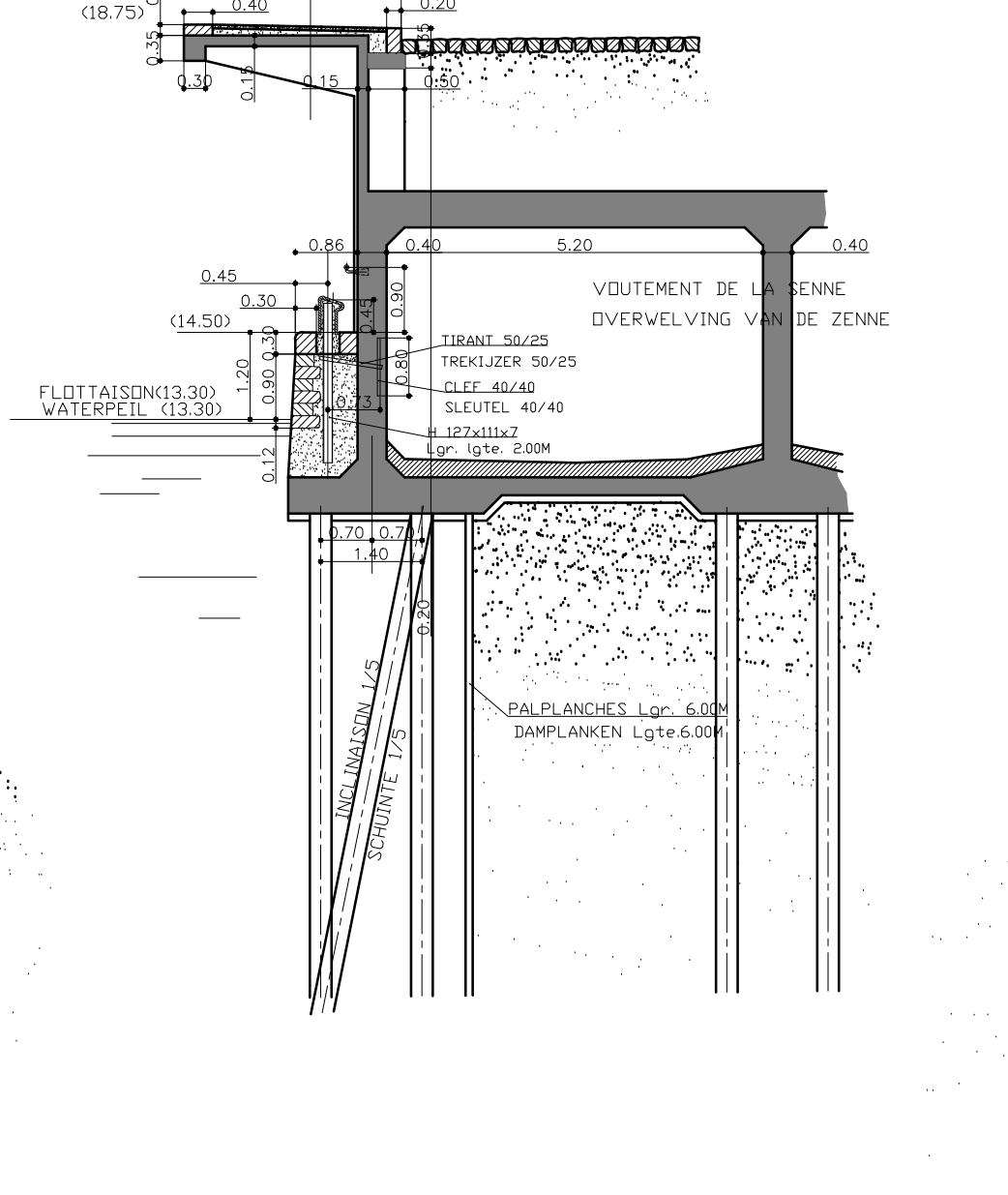
PR.2.37/VIII



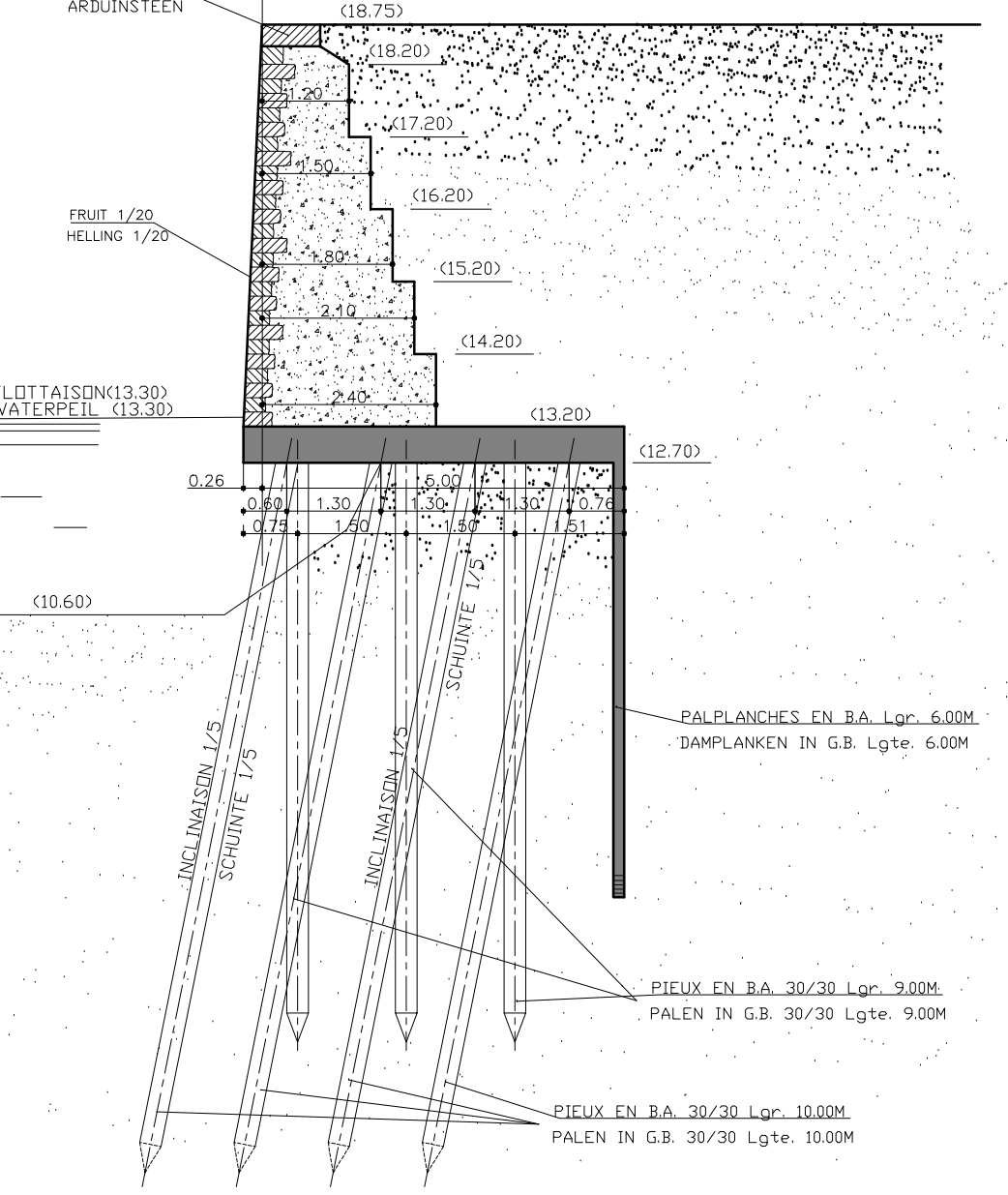
PR.2.37/X



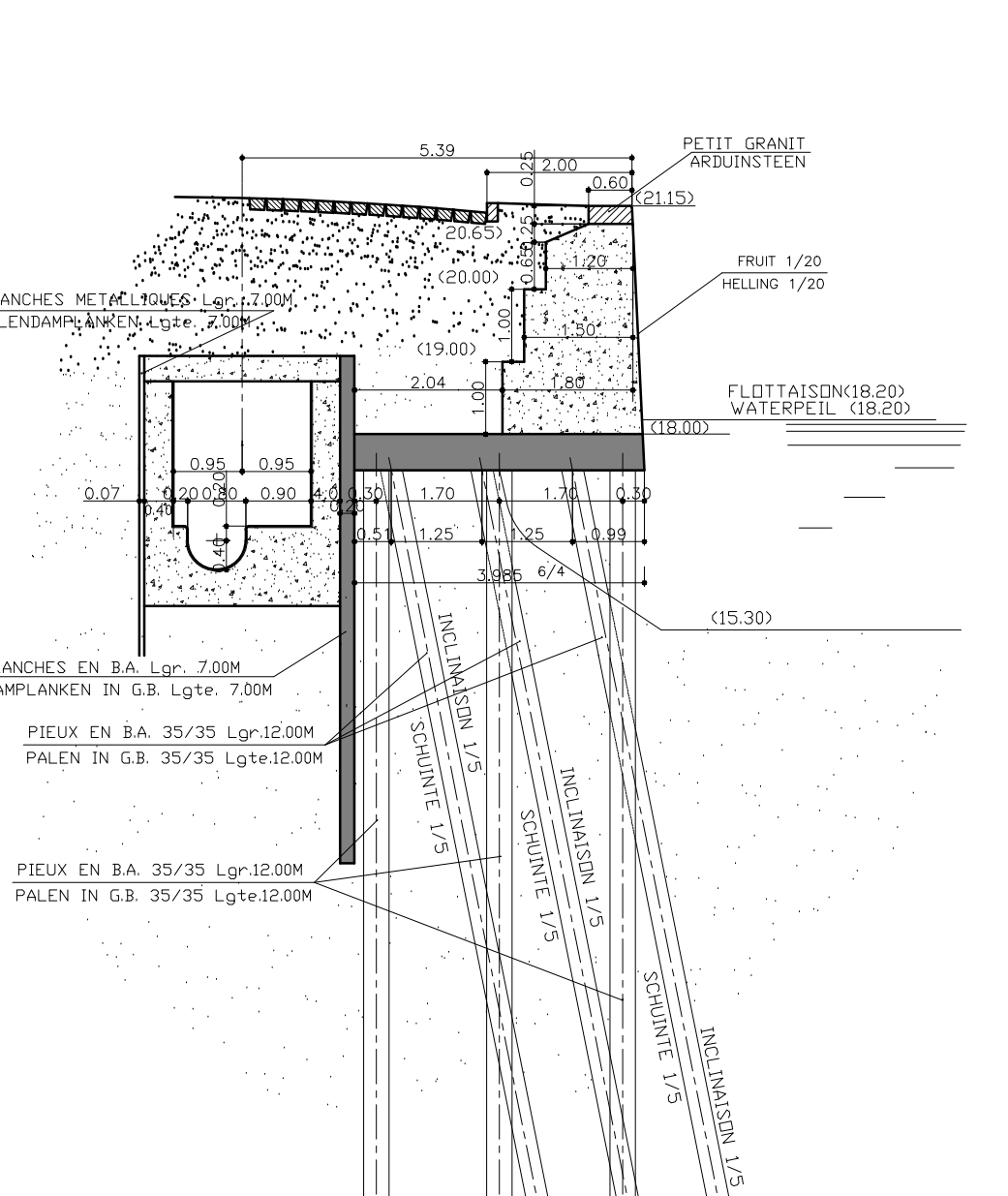
PR.2.38/C



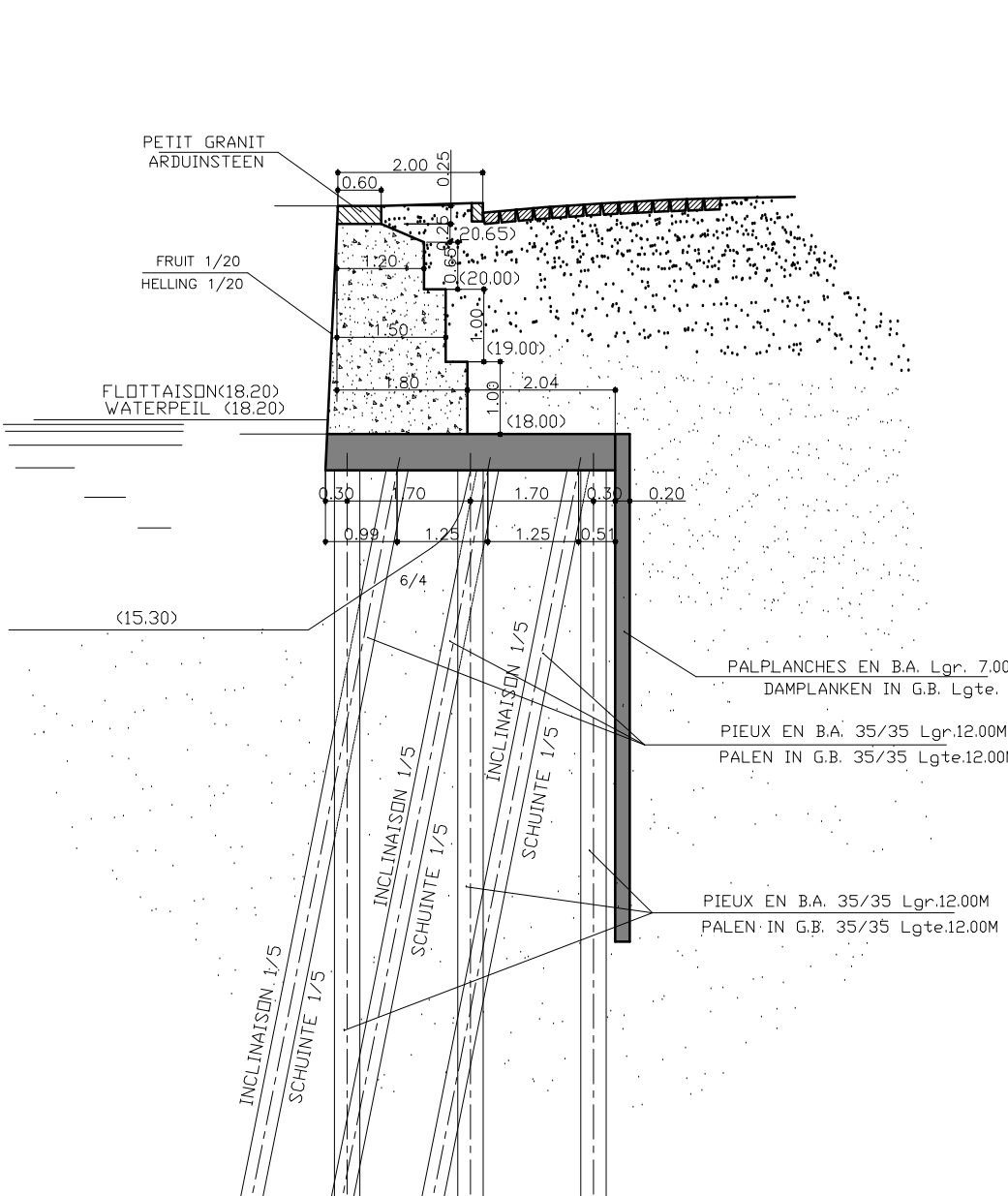
PR.2.38/II



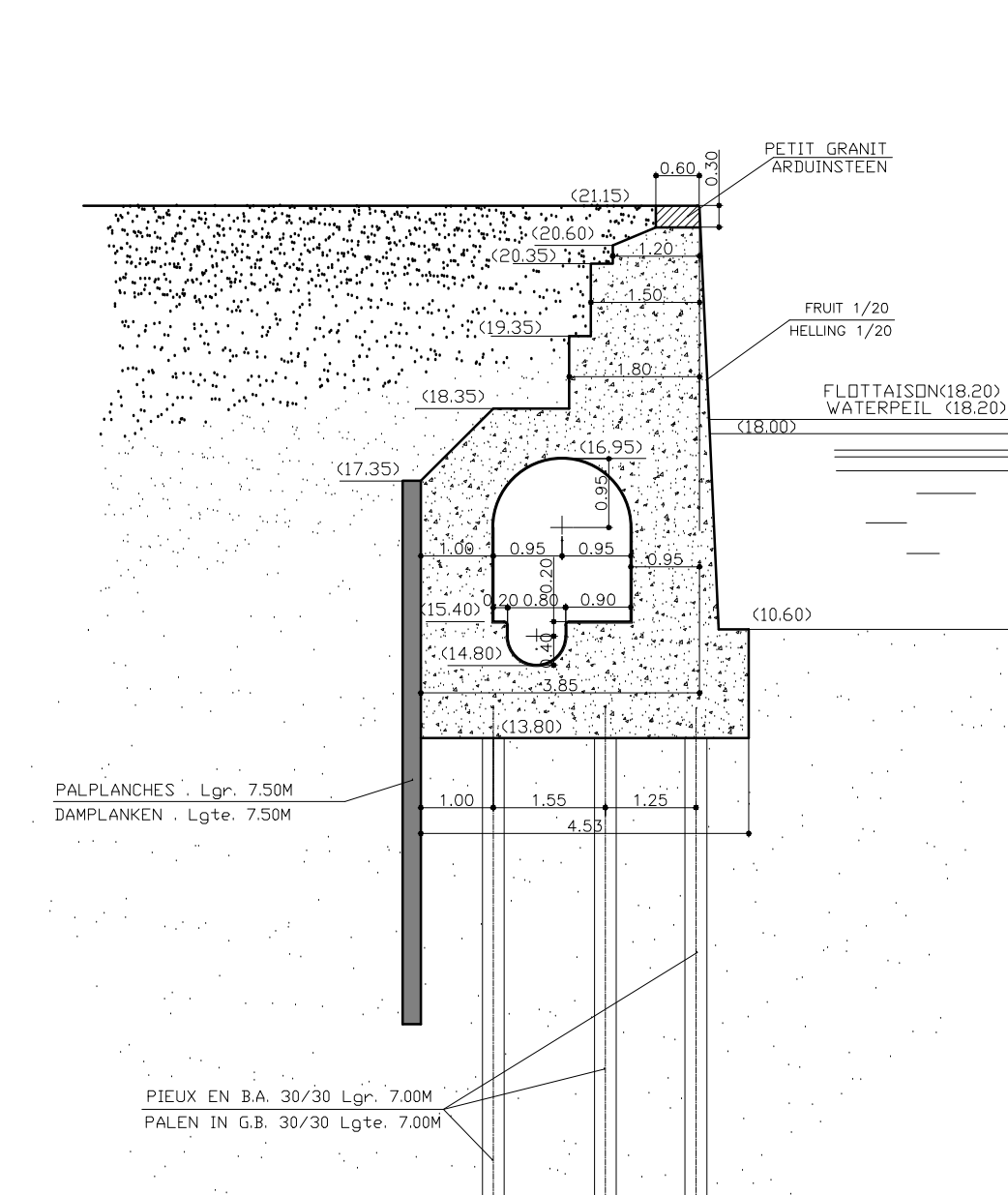
PR.2.39/2 (RIVE GAUCHE)



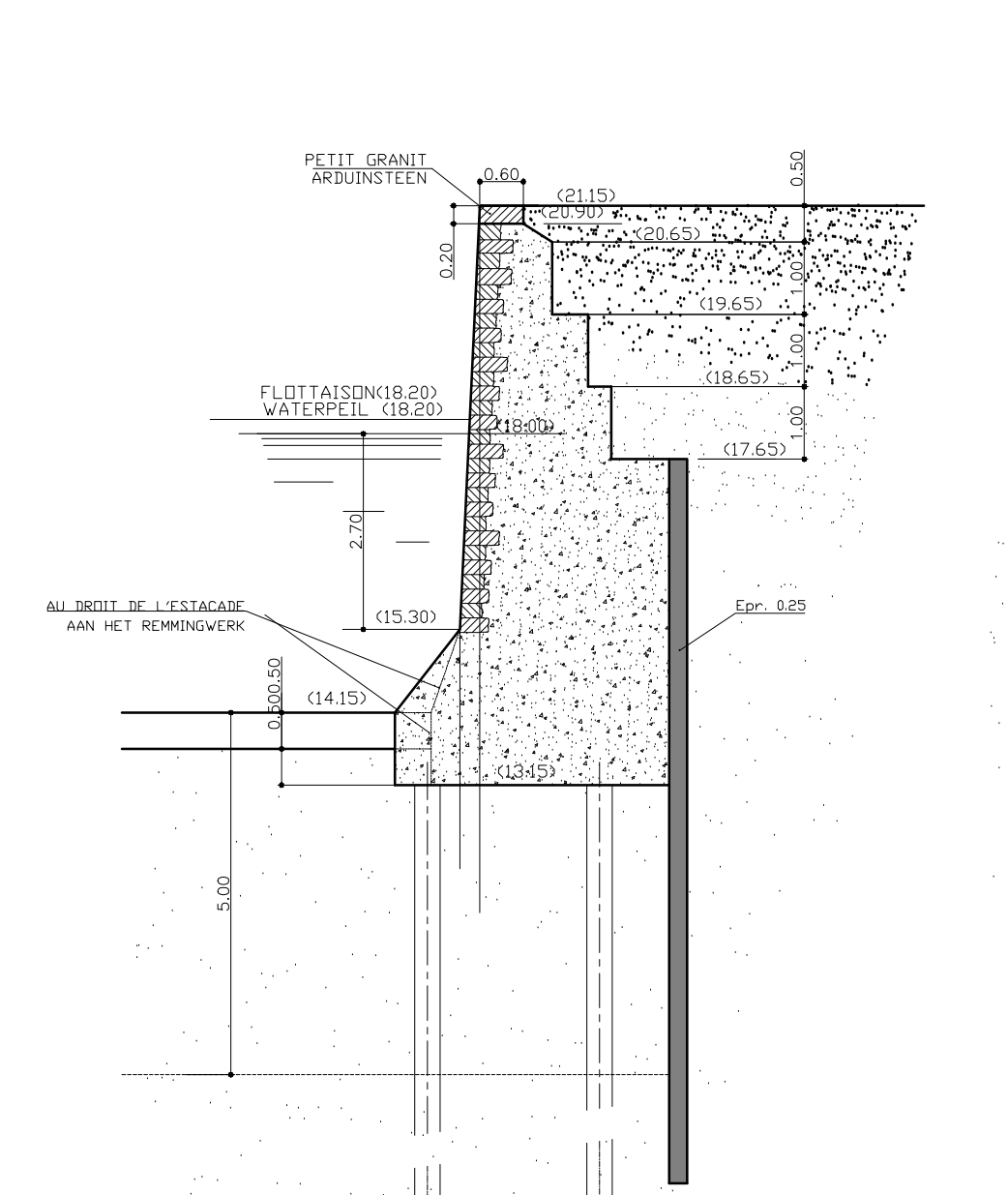
PR.2.39/2 (RIVE DROITE)



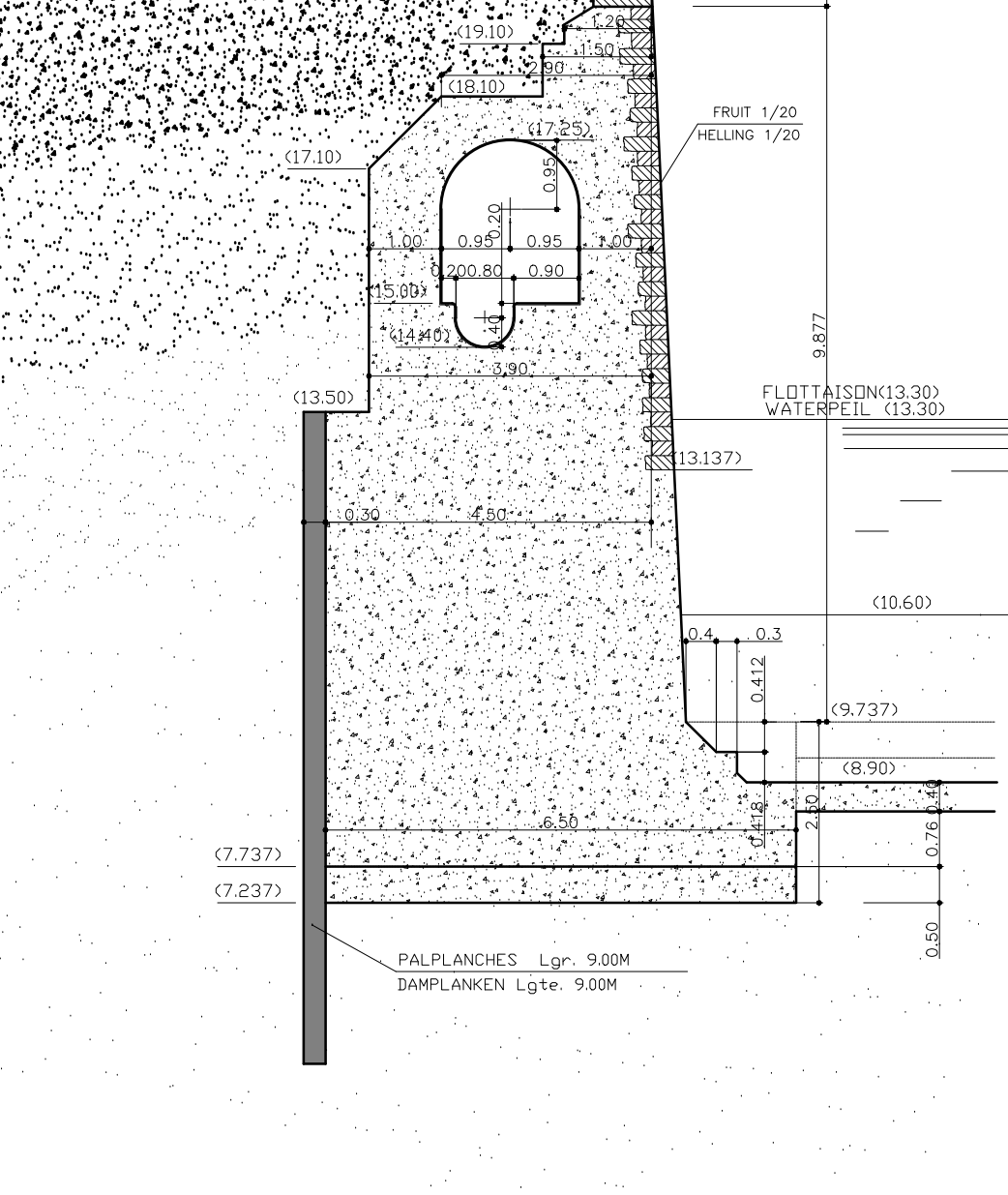
PR.2.39/4



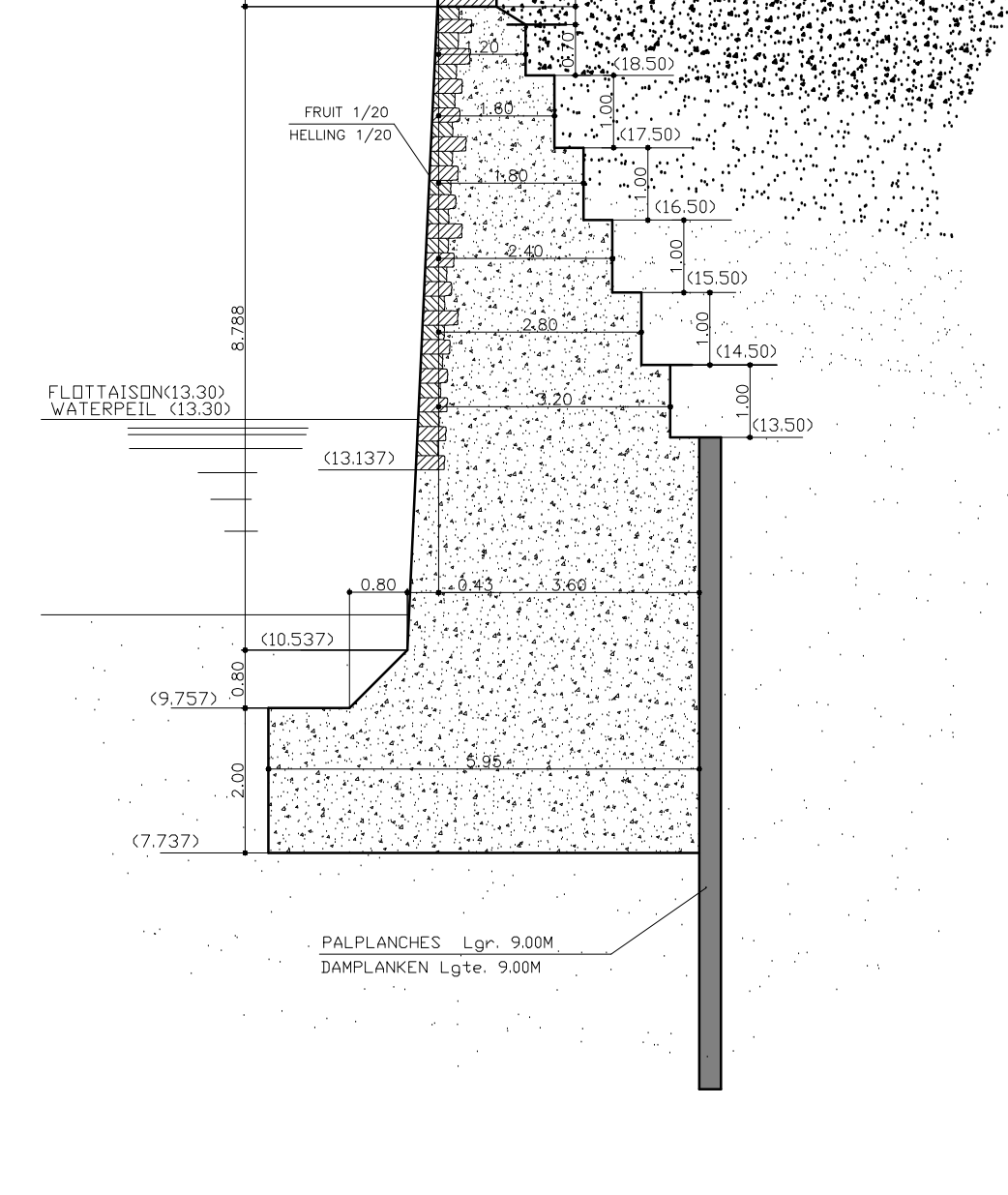
PR.2.39/5



PR.2.40/B



PR.2.40/CD



 <p>Plan des Aménagements, 1000 Bruxelles/Brussel Tel: +32 2 435 67 66 Fax: +32 2 435 67 74 www.portbrussels.be</p>	
DRAME PAR: OPERAAT DOOR:	PLAN N° 1223-09
ir. J. OPSOMER	WATERSCHAP MAGNET DOOR: ir. J. Opsomer
PROPOSÉ PAR LE DIRECTEUR TECHNIQUE VOORSTELDE DOOR DE TECHNISCHE DIRECTEUR	DATE: EXÉCUTIF: L'ENTREPRENEUR: VOOR AANVAARDING:
ing. D. CAMBRE	POUR ACCORD: VOOR AANVAARDING:
LE DIRECTEUR GÉNÉRAL ADJOINT ADJUNCT-DIRECTEUR: GENERAL	LE DIRECTEUR GÉNÉRAL DIRECTEUR: GENERAL
Ph. MATTHIS	Ph. AMOENS
CANAL SUD ZONE F - G PROFILS DE QUAI & SONDAGES	ZUIDKANAAL ZONE F - G KAAIPROFIELEN & PEILINGEN